

CEM III/A 32,5 R-MSR **ECOPlanet Expert**

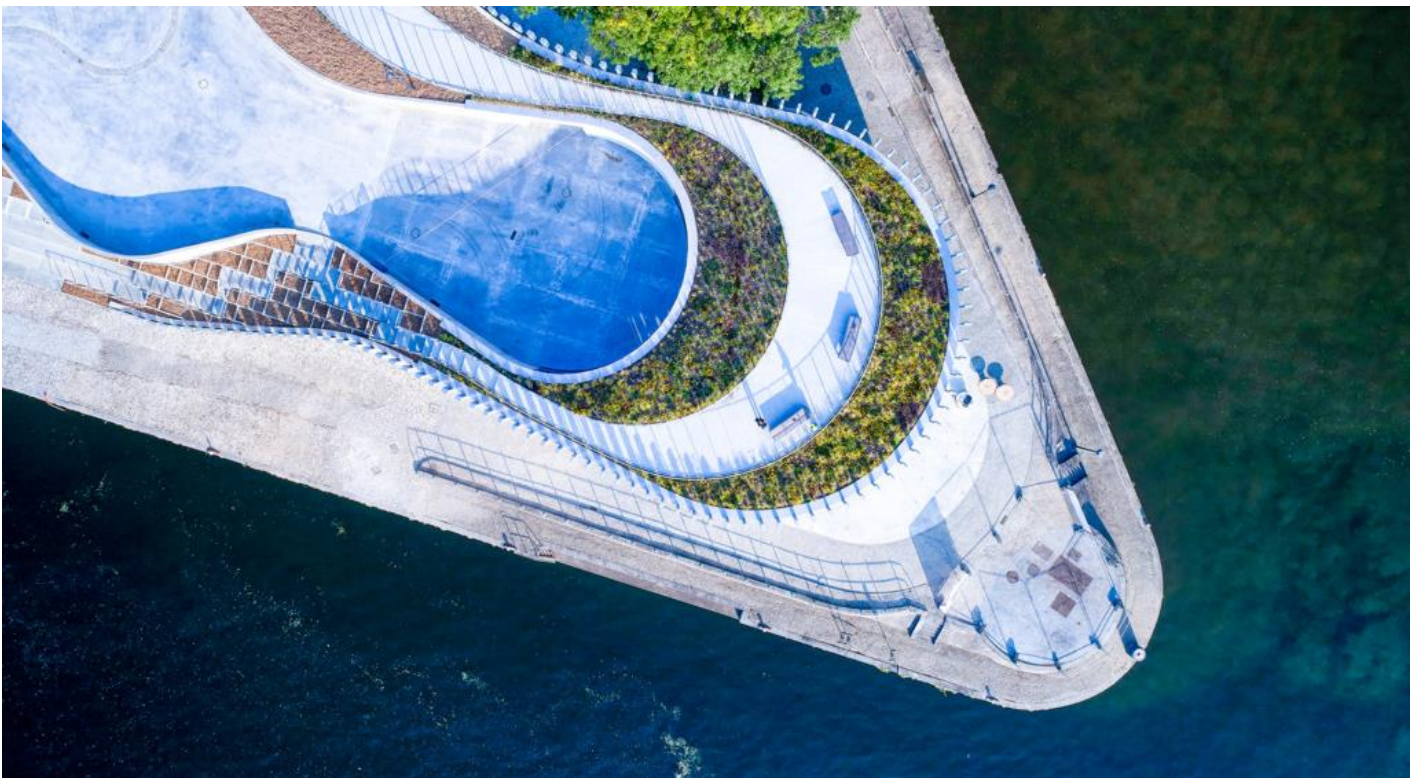
Moderate sulphate resistant blast furnace cement with high early strength and 32,5 MPa standard strength according to MSZ EN 197-1.

Scope of utilization

Manufacturing readymix concrete:

Due to the composition it's a sustainable cement recommended for industrial and professional use. This type of cement is primarily suitable for producing concrete that is subject to aggressive chemical stress. It can be built in monolith structures exposed to aggressive chemical effects reaching the maximum limit of exposure classification XA4. Relevant limit values are as per Table 2 on page 33 and Table 2 on page 34 of MSZ 4798-1:2016

The product is sold in bulk.



Directions of use for the production of concrete mixtures and concrete structures with the cement type CEM III/A 32,5 R-MSR

High early strength, 32,5 MPa standard strength, moderate heat development cement with high post-strengthening. Due to the blast furnace slag content the concrete made with CEM III/A 32,5 R-MSR cement resists the aggressive chemical effects occurring in natural soil and ground water until the exposure classification is maximum XA4. It is mainly recommended to be used for producing C8/10 – C40/50 compressive strength class concrete mixtures. In winter conditions it is recommended for use indoors or with increased frost protection.

In order to achieve great usability and low water/cement factors the application of plasticizer or super plasticizer admixtures is suggested. With decent handling and appropriate compression beautiful surfaces can be produced. Due to its composition and low heat development the appropriate mix of concrete made with this type of cement has a low chance of cracking.

Aftercare of the structure is very important and has to be planned while taking into consideration the actual weather conditions and local facilities.

Packing:	in bulk: in tanker trucks
Transportation:	on road or by rail
Storage:	dry, in closed silos, protected from moisture
Durability:	bulk - two months in dry silos after delivery
Colour In powder form:	light grey, colour may vary compared to other cements and types
Date of issuing:	21. March 2024
Valid:	until revocation

Please ask for and use our safety data sheet!

MSZ EN 197-1 CEM III/A 32,5 R / MSZ 4737-1 CEM III/A 32,5 R-MSR cement technical parameters

Cement composition CEM III/A 32,5 R-MSR contains the amount of clinker and other additives that is set in standard MSZ EN 197-1. Furthermore is contains gypsum in the amount necessary for controlling the start of the setting.

Technical parameters	Typical value	Standard
Start of setting time (minutes):	270	≥ 75
7 day compressive strenght (MPa):	15,0	≥ 10,0
28 day compressive strenght (MPa):	47,0	≥ 32,5 ≤ 52,5

Above technical parameters are given by the results measured at the quality assessment laboratory of Holcim Hungary Ltd. The assessments have been carried out according to the effective MSZ EN 196-1; MSZ EN 196-3 and MSZ EN 196-6 standards.

Given parameters are informative, please ask for assistance from our adviser colleague.

Sales

Tamás Hoffmann - CEO

+36 20 946 6081, tamas.hoffmann@holcim.com

Csaba Putler - Sales Director

+36 30 970 5149, csaba.putler@holcim.com

Enikő Dósai-Molnár - Logistics and Customer Service Group Leader

+36 30 574 6841, eniko.dosai@holcim.com

Csaba Peresztegi - Area manager of West Hungary

+36 30 351 4285, csaba.peresztegi@holcim.com

János Simon - Area manager of East Hungary

+36 30 376 9762, janos.simon@holcim.com

Holcim Hungary Ltd.

Address: Cement street 1. Királyegyháza 7953

Mailing address: Királyegyháza Cement Plant
PO Box 54. Szentlőrinc 7940

Phone: +36 73 500 900

Fax: +36 73 500 958

Email: cementhungary@holcim.com

www.holcim.hu